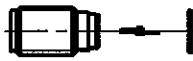
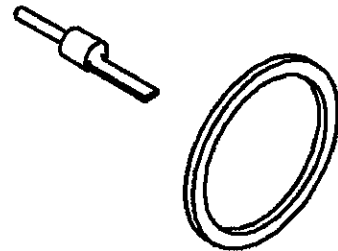
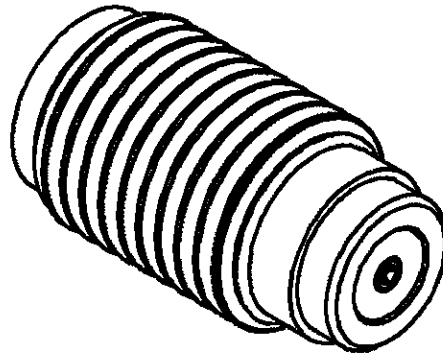
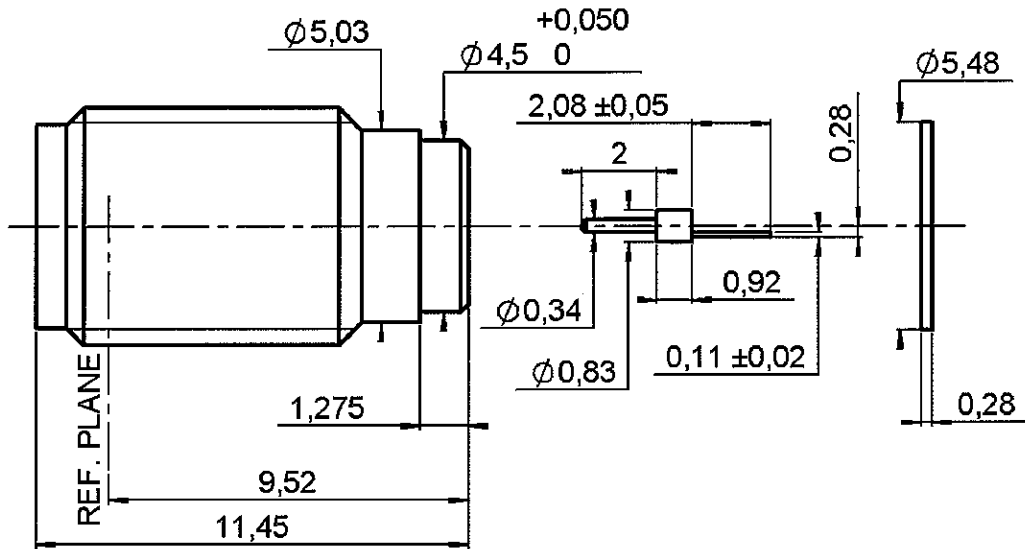


SCREW ON HERMETIC RECEPTACLE

R125.605.311

AUXILIARY CONTACT

Series : SMA



scale 1/1

All dimensions are in mm.

COMPONENTS	MATERIALS	PLATINGS (µm)
BODY	STAINLESS STEEL	PASSIVATED .
CENTER CONTACT	BERYLLIUM COPPER	GOLD 2.5 OVER COPPER 2.5
OUTER CONTACT		
INSULATOR	PTFE	
GASKET	SILICONE RUBBER	
OTHERS PARTS	BRASS	TIN 3
-	-	-
-	-	-

Issue : 0508 A

In the effort to improve our products, we reserve the right to make changes judged to be necessary.



SCREW ON HERMETIC RECEPTACLE

R125.605.311

AUXILIARY CONTACT

Series : SMA

PACKAGING

SPECIFICATION

Standard	Unit	Other
100	'W' option	Contact us

ELECTRICAL CHARACTERISTICS

ENVIRONMENTAL

Impedance		50 Ω
Frequency		0-18 GHz
VSWR	1.2 +	0.000 x F(GHz) Maxi
Insertion loss		0.07 √F(GHz) dB Maxi
RF leakage	- (NA - F(GHz)) dB Maxi
Voltage rating		450 Veff Maxi
Dielectric withstanding voltage		1400 Veff mini
Insulation resistance		5000 MΩ mini

Operating temperature	-65/+155 °C
Hermetic seal	10-7 Atm.cm ³ /s
Panel leakage	NA

OTHERS CHARACTERISTICS

Assembly instruction

Others :

MECHANICAL CHARACTERISTICS

Center contact retention	
Axial force – Mating end	15 N mini
Axial force – Opposite end	15 N mini
Torque	NA N.cm mini
Recommended torque	
Mating	NA N.cm
Panel nut	170 N.cm
Mating life	500 Cycles mini
Weight	1.450 g

Issue : 0508 A

In the effort to improve our products, we reserve the right to make changes judged to be necessary.



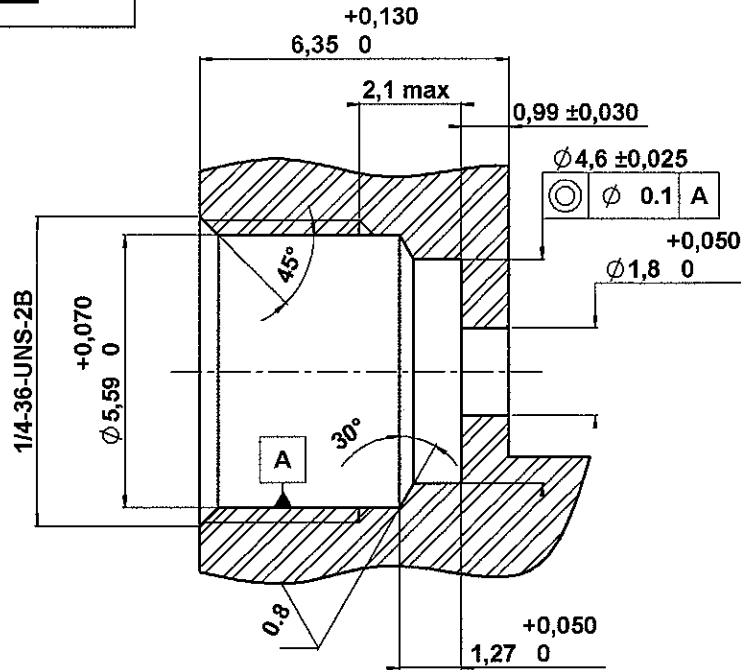
SCREW ON HERMETIC RECEPTACLE

R125.605.311

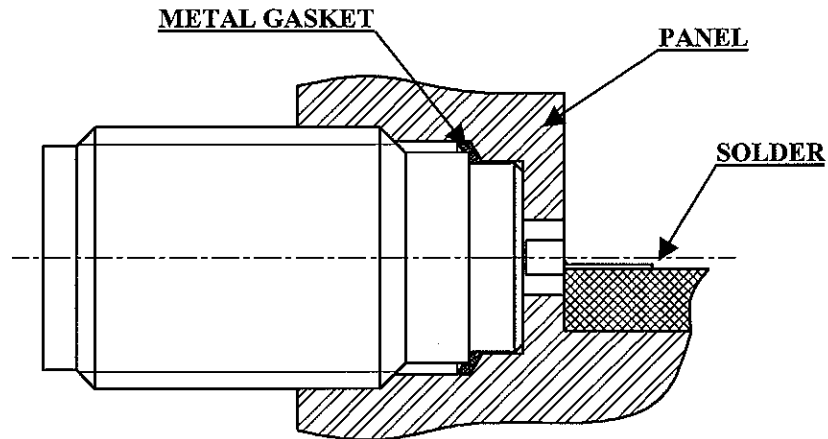
AUXILIARY CONTACT

Series : SMA

PANEL DRILLING



RECOMMENDED MOUNTING HOLE DETAIL



Assemble metal gasket onto connector. Screw both parts into the housing.
 Tighten the connector up to 280 Ncm +/- 10 Ncm (use special tooling set RADIALL R282 341) .
 Thus the connection hermeticity is guaranteed.
 Then solder the pin on the track.
 Beware there is not too much solder.

Issue : 0508 A

In the effort to improve our products, we reserve the right to make changes judged to be necessary.

